



NAAC
GRADE **A++**

GRADUATION BROCHURE

WWW.LPU.IN

Think**BIG**

ABOUT LPU

A university with the infrastructure of global standards, internationally benchmarked curricula, rich diversity of students, innovative pedagogy for participative and experiential learning with focus on research, innovation and entrepreneurship.



LPU Receives Highest NAAC Grade

The University has achieved high rankings across various parameters from esteemed international and national bodies. LPU stands tall as the 1st among all private universities in India, receiving the highest NAAC grade A++ with an exceptional 3.68 score on a scale of 4.

High Average Salaries at top brands

Big brands, high average salaries and lucrative careers in Placement with 2100+ unique companies like Google, Microsoft etc.



Students from all states and 40+ countries of the world

LPU has 30000+ students from all the states of India and from 40+ different countries across the world.

Industry led Curriculum

Curriculum at LPU is developed in complete consultation with industry and is taught by highly rated faculty/ Industry professionals.



Design your degree

Find your niche, follow your passion and craft your career in the academic field of your interest with unique combinations of 100+ majors and minors, interdisciplinary curriculum, career pathways.

A vibrant campus

LPU has 100+ active student led clubs/ organisations and conducts more than 500 competitions/ events from sports to co-curricular every year.



Business Incubation

With 70+ start-ups incubated, 100+ events focussing on entrepreneurship, students at LPU are encouraged and inspired to pursue their entrepreneurial passion.

State of the art Labs, Stadiums, Auditoriums & Residential complex

A vibrant campus with 90 lakh sq.ft. covered area, top lab infrastructure, largest residential capacity, mall, ultra-modern sports facilities, innovation studio, safe and secure campus, student activity centre and a lot more to make it world class.



Host to multiple heads of nations

LPU has been the host to heads of seven nations, governors of many States, ambassadors of different nations and, various central and state cabinet ministers.

LPU RANKINGS

LPU has been ranked amongst the top Universities by Global Ranking Agencies, Government of India and Industry Associations.



Times Higher Education
Impact Rankings 2024

Times Higher Education
Impact Rankings 2024

Ranks LPU

2nd

in India

Amongst Both
Government &
Private Universities

Worldwide - 101-200 Band



The WORLD
UNIVERSITY
RANKINGS
for INNOVATION

The World University
Rankings for Innovation 2024

Ranks LPU

4th

in India

Amongst Both
Government &
Private Universities

126 in Global Top Innovative Universities



World
University
Rankings
2025

Times Higher Education
World University Rankings 2025

LPU is now ranked among the

TOP 10

Universities in India

Including all Government (even IITs & NITs),
& Private Institutions

**from 25th to 9th position in
just one year**

Worldwide - 601-800 Band

Ahead of IIT Guwahati, IIT Ropar, IIT Mandi,
IIT Gandhinagar, Jawahar Lal Nehru University
(JNU), University of Delhi and many NITs



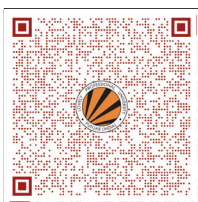
Rankings 2024

Ministry of Education,
Government of India

Ranks LPU

27th

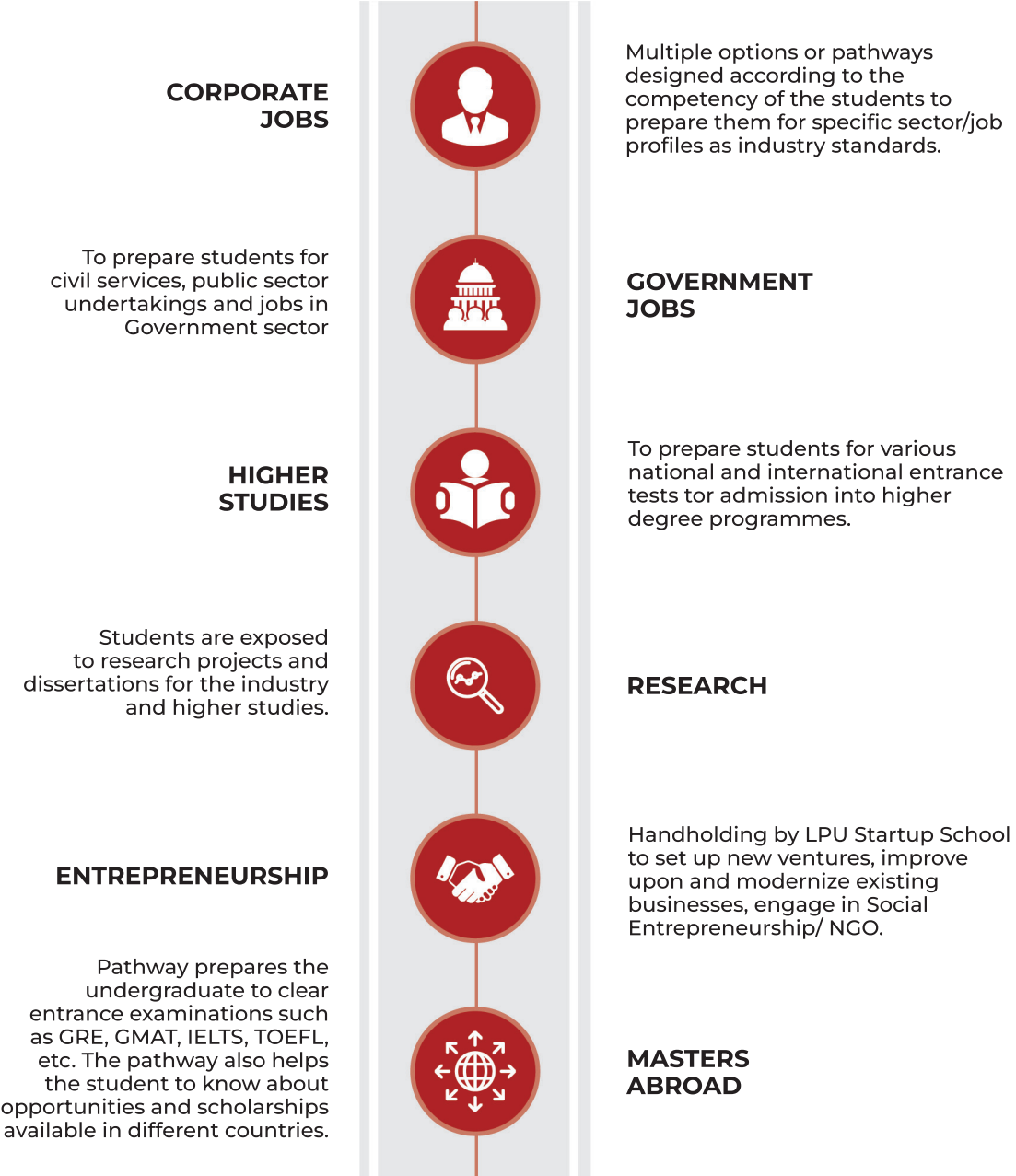
Amongst Both
Government &
Private
Universities



Scan QR code to know
about more rankings

CAREER PATHWAYS

As each individual is unique and approaches life in a different manner, so we allow each of them to choose his/her career pathways based on individual interest to prepare for life :

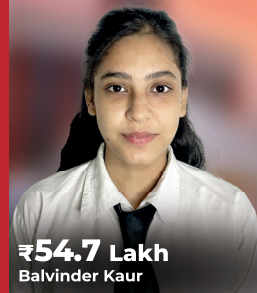
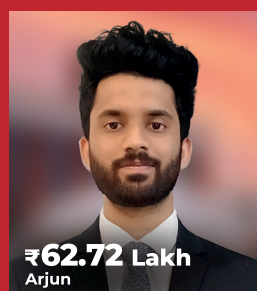


INDUSTRIAL TIE-UPS

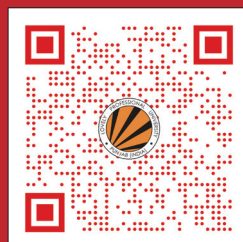
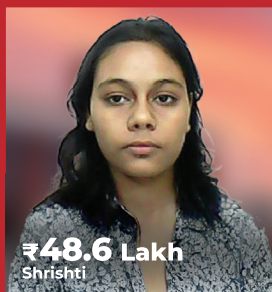
For Hands-on practical training and certifications in collaborations with few top brands of world are mentioned below.

UNMATCHED PLACEMENT PACKAGES



1500+ LPU STUDENTS SELECTED AT PACKAGES OF ₹10-₹62.72 LAKH*



Scan QR code for all details of students placed at different packages

*In 2021 - 2024 batches

PROGRAMMES AFTER 12th (10+2)

ENGINEERING

- B.Tech. (Electronics and Communication Engg.)
- B.Tech. (ECE) [2+2 with international credit transfer option]
- B.Tech. (Computer Science and Engineering)
- B.Tech. (CSE) [2+2 with international credit transfer option]
- B.Tech. CSE - Data Science with ML
- B.Tech. CSE - DevOps (Software Development and IT Operations)
- B.Tech. (CSE - AI and Data Engineering)
- B.Tech. (CSE - Software Product Engineering)
- B.Tech. (CSE-Machine Intelligence and Data Analytics)
- B.Tech. (CSE-User Experience (UX)/User Interface (UI))
- B.Tech. (CSE - Big Data Analytics)
- B.Tech. (CSE - Cloud Computing)
- B.Tech. (CSE-Artificial Intelligence and Machine Learning)
- B.Tech. (CSE- Generative Artificial Intelligence)
- B.Tech. (Hons.) (CSE-Data Science and Data Engg.)
- B.Tech. (Hons.) (CSE-Cyber Security and Block Chain)
- B.Tech. (Hons.) (CSE-Full Stack Software Development)
- B.Tech. (Information Technology)
- B.Tech. (Mechanical Engineering)
- B.Tech. (ME) [2+2 with international credit transfer option]
- B.Tech. (ME - Mechatronics)
- B.Tech. (ME - Mechatronics) [2+2 with international credit transfer option]
- B.Tech. (Aerospace Engineering)
- B.Tech. (Civil Engineering)
- B Tech (CE) [2+2 with international credit transfer option]
- B.Tech. (Electrical Engineering)
- B.Tech. (Electrical and Electronics Engineering)
- B.Tech. (Robotics and Automation)
- B.Tech. (Biotechnology)
- B.Tech. (Biotechnology) [2+2 with international credit transfer option]
- B.Tech. (Food Technology)
- B.Tech. (Biomedical Engineering)
- B.Tech. (Automobile Engineering)
- B.Tech. (Automobile Engineering) [2+2 with international credit transfer option]
- B.Tech. (Chemical Engineering)

COMPUTER APPLICATIONS

- BCA
- BCA (Hons.) (Cyber Security)
- BCA (Data Science)
- BCA (Artificial Intelligence and Machine Learning)
- B.Sc. (Hons.) (Computer Science - Cyber Security)
- B.Sc. (Information Technology)
- B Sc (IT) [2+2 with international credit transfer option]

COMMERCE

- B.Com.
- B.Com. [2+2 with international credit transfer option]
- B.Com. (Hons.)
- B.Com. (Management Accounting and International Finance)
- B.Com. (International Accounting)

PHARMACEUTICAL SCIENCES/ MEDICAL LABORATORY SCIENCES

- B.Pharm.
- B.Sc. (Medical Laboratory Technology)

PHYSIOTHERAPY/ LIBRARY SCIENCE

- Bachelor of Physiotherapy (BPT)
- Diploma in Library and Information Sciences (D. Lib.I.Sc.)

EDUCATION/ PHYSICAL EDUCATION

- Integrated B.A. - B.Ed.
- Integrated B.Sc. - B.Ed.
- B.Sc. (Health and Physical Education)
- Bachelor of Physical Education and Sports (BPES)

FINE ARTS/ PERFORMING ARTS/ ARTS (HUMANITIES)

- B.A. (Fine Arts)
- Bachelor of Fine Arts (BFA)
- B.A. (Music Vocal)
- B.A. (Theatre)
- BPA (Music Vocal)
- BPA (Theatre)
- Bachelor of Arts (B.A.)
- B.A. (Hons.) (English, Political Science, History, Sociology, Geography, Psychology, Punjabi, Public Administration)

PROGRAMMES AFTER 12th (10+2)

MANAGEMENT

- BBA
- BBA [2+2 with international credit transfer option]
- Integrated BBA - MBA
- BBA (Hons.)
- BBA (Financial Markets)
- BBA (Information Technology)
- BBA (International Finance)
- BBA (Business Analytics)

HOTEL MANAGEMENT & TOURISM

- B.Sc. (Airlines, Tourism and Hospitality)
- BBA (Tourism and Hospitality)
- BBA (Airlines and Airport Management)
- B.Sc. (Hotel Management)
- Bachelor of Hotel Mgt and Catering Technology (BHMCT)
- Bachelor of Hotel Mgt and Catering Technology (BHMCT) [2+2 with international credit transfer option]
- B.Sc. (Culinary Arts)
- B.Sc. (Culinary Arts) [2+2 with international credit transfer option]

LAW

- B.A., LL.B.(Hons.)
- BBA, LL.B. (Hons.)

FASHION

- B.Sc. (Design - Fashion)
- B.Design (Fashion)
- B Design (Fashion) [2+2 with international credit transfer option]

ARCHITECTURE/ PLANNING

- B. Arch.
- Integrated B. Plan - M. Plan

AGRICULTURE

- B.Sc. (Hons.) Agriculture

JOURNALISM & FILM PRODUCTION/ MULTIMEDIA & ANIMATION

- B.A. (Journalism and Mass Communication)
- B.Sc. (Film and TV Production)
- B.Design (Film and TV Production)
- B.Sc. (Design - Multimedia)
- B.Design (Multimedia)
- B.Sc. (Design - Gaming)
- B.Design (Gaming)
- B.Sc. (Design - Graphics)
- B.Design (Graphics)

INTERIOR & FURNITURE DESIGN

- B.Sc. (Design - Interior and Furniture)
- B.Design (Interior and Furniture)

INTERACTION DESIGN (UI/UX)/ PRODUCT & INDUSTRIAL DESIGN

- B.Design (User Experience)
- B.Design (Product and Industrial)

FORENSIC SCIENCES/ ECONOMICS

- B.Sc. (Forensic Sciences)
- B.Sc. (Hons.) Economics

FOOD TECHNOLOGY/ NUTRITION & DIETETICS

- B.Sc. (Hons.) Food Technology
- B.Sc. (Food Technology)
- B.Sc. (Nutrition and Dietetics)

BIOTECHNOLOGY/ MICROBIOLOGY/ ZOOLOGY

- B.Sc. (Hons.) Biotechnology
- B.Sc. (Biotechnology)
- B.Sc. (Hons.) Microbiology
- B.Sc. (Microbiology)
- B.Sc. (Hons.) Zoology
- B.Sc. (Zoology)

PHYSICS/ CHEMISTRY/ MATHEMATICS

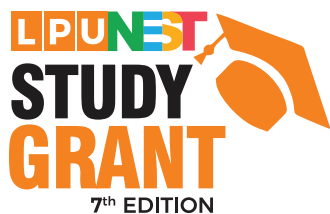
- B.Sc. (Hons.) Physics
- B.Sc. (Physics)
- B.Sc. (Hons.) Chemistry
- B.Sc. (Chemistry)
- B.Sc. (Hons.) Mathematics
- B.Sc. (Mathematics)

2+2 INTERNATIONAL CREDIT TRANSFER PROGRAMMES

Study for 2 yrs. in India, 2 yrs. in the USA, UK, CANADA, AUSTRALIA etc. For details, visit www.lpu.in

Scan QR code for details of students who availed benefits of International Credit Transfer Programme





Candidates Qualifying LPUNEST will get

STUDY GRANT OF ₹ 1 LAC PER STUDENT

to study at IITs/ NITs/ IIMs/ NLUs/ IHMs/ NIDs/ IITs (IDC/ DoD)/ NIFTs/ AIIMs/ Govt. Medical Universities & Colleges (Central/ State)

Candidate qualifying LPUNEST is also eligible for admission in LPU and can avail the scholarship

Apply for



NATIONAL ENTRANCE AND SCHOLARSHIP TEST

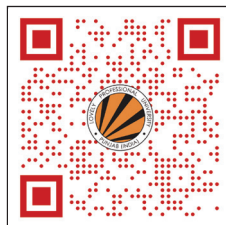
How to Apply

Applicants can apply online at www.lpu.in

For last date and other details,
refer university website www.lpu.in



For more details may
scan the QR Code



L OVELY
P ROFESSIONAL
U NIVERSITY

Transforming Education Transforming India

LOVELY PROFESSIONAL UNIVERSITY (LPU)

Jalandhar-Delhi G.T.Road, Phagwara, Punjab (India) 144411

For General Enquiry: **01824-517000**

Visit: www.lpu.in | Email: admissions@lpu.co.in

Follow us



**Still have questions?
SCAN ME**



The information provided in this Brochure is a general proposal and not a commitment/ confirmation of any type. If the information available on the University website under the head Admissions i.e. <https://www.lpu.in/admission/> or Prospectus differs from the information provided in this Brochure, then the information available on the University website (under the head Admissions) or Prospectus in that case, the subsequent Corrigendum will prevail.