



L OVELY
P ROFESSIONAL
U NIVERSITY

Transforming Education Transforming India

SCHOOL OF **MECHANICAL ENGINEERING**

AT
LOVELY
PROFESSIONAL
UNIVERSITY

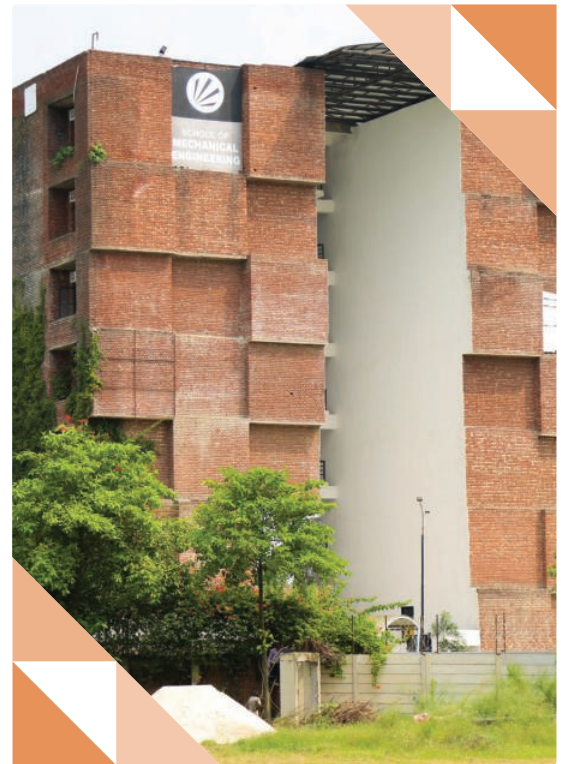


University with highest NAAC Grade A++ with 3.68 score on 4 point scale

Think**BIG**

LOVELY PROFESSIONAL UNIVERSITY

Lovely Professional University (LPU) is a multi-faculty research-oriented institution with hi-tech campus offering more than 200 professional programmes. LPU campus is a complete world in itself having students from all states of India and more than 40+ countries of the world. LPU is a world class institution with internationally benchmarked curricula, innovative pedagogy focused on experiential learning, cutting edge research, 450+ foreign tie-ups, well qualified faculty with industry exposure, outstanding sports & cultural facilities, excellent residential facilities, In-campus shopping mall, hospital, banks, postal services etc. The University is ranked high on various parameters by Government Bodies and other credible organisations. LPU receives Highest Grade A++ with 3.68 score on 4 Point Scale by NAAC (National Assessment & Accreditation Council), an Autonomous Institution of the University Grants Commission (UGC), Ministry of Education, Govt. of India. The Times Higher Education World University Rankings 2025 has ranked LPU amongst Top 10 Universities in India Including all Government (even IITs & NITs), & Private Institutions, and many more.



SCHOOL OF MECHANICAL ENGINEERING

Among the best Engineering Colleges for Aerospace Engineering, Automobile Engineering, Mechatronics Engineering, and Mechanical Engineering in Punjab, India. LPU School of Mechanical Engineering encourages all-round development through industry adapted curriculum focusing on innovation and problem solving in a broad spectrum of topics that impact all sectors of our society. Its curriculum integrates design, materials, manufacturing, automation, robotics experience through multidisciplinary knowledge approach. Each year, our Engineers set the benchmark a step higher by securing placements in top companies.





VISION

The School of Mechanical Engineering aspires to gain a globally recognized foothold in finding solutions to societal needs by inspiring professionals and entrepreneurs through academics, innovation and leadership qualities.

MISSION

- To impart knowledge and skills through extensive practical training with a focus on outcome-based learning
- To connect with industries for curriculum development and industrial training opportunities.
- To provide research environment for addressing societal problems
- To develop skills for lifelong learning among students which leads to bright careers.
- To produce competitive professionals and entrepreneurs with ethical leadership qualities.

RANKINGS



**World
University
Rankings 2024**

Times Higher Education World University's
Subjectwise Rankings In India

RANKS LPU

3rd

IN ENGINEERING

**AMONGST BOTH
GOVERNMENT & PRIVATE
UNIVERSITIES**

(World Wide - 401-500 Band)



**The WORLD
UNIVERSITY
RANKINGS
for INNOVATION
Rankings 2024**

RANKS LPU

4th

IN INDIA

**AMONGST BOTH
GOVERNMENT & PRIVATE
UNIVERSITIES**



Ministry of Education, Government of India

RANKS LPU

50th

IN ENGINEERING

**AMONGST ALL
GOVERNMENT AND
PRIVATE UNIVERSITIES**

PROGRAMS OFFERED

After 12th (10+2), Graduation & Post Graduation

- B.Tech.** (Mechanical Engineering) (ME)
- B.Tech.** (ME) [2+2 with International Credit Transfer Option]
- B.Tech.** (ME - Mechatronics)
- B.Tech.** (ME - Mechatronics) [2+2 with International Credit Transfer Option]
- B.Tech.** (Aerospace Engineering)
- B.Tech.** (Automobile Engineering) (AE)
- B.Tech.** (Automobile Engineering) [2+2 with International Credit Transfer Option]
- B.Tech.** [Lateral Entry] - (Mechanical Engineering, ME - Mechatronics, Aerospace Engineering, Automobile Engineering)
- M.Tech.** [Full Time] - (Aerospace Engineering)
- Ph.D.** (Aerospace Engineering) [Full Time & Part Time]
- Ph.D.** (Mechanical Engineering) [Full Time & Part Time]



HIGHLIGHTS OF SCHOOL

Accreditation and Rankings

Our B.Tech. Mechanical Engineering program received NBA accreditation. In the SCIMAGO 2024 rankings, we are 16th in Automotive, 20th in Aerospace, 21st in Engineering, and 39th in Mechanical Engineering. We are also in the top 50 in NIRF rankings.



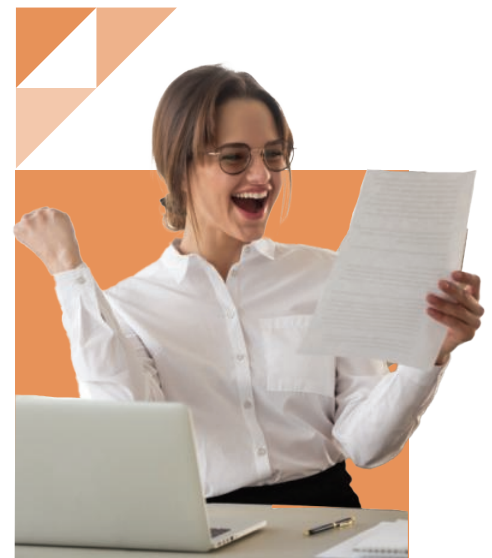
Industry Tie-ups

The School has strong industry tie-ups with Siemens, ASME, SAE, Tech Mahindra, Bosch, Autodesk, and others, enhancing student learning and career opportunities.



Placements

Our students have secured opportunities with prestigious companies like Autodesk, LG, Honda, Bosch, Mahindra, and Tata Advanced Systems and many more. The highest salary package offered is 54.9 lakhs, with internship stipends up to 1 lakh per month.



TOP COMPANIES HIRING

**HONDA****Mahindra****TATA**
ADVANCED SYSTEMS**LG**
Life's Good**FORBES**
MARSHALL**BOSCH****VOLTAS**
A **TATA** Enterprise**ASHOK LEYLAND****BLUE STAR**

PLACEMENT HIGHLIGHTS

Highest Package
54.90 Lac

Average Package
6.72 Lac

Highest Internship
Stipend Offered
Per Month
1 Lac



ALUMNI SUCCESS STORY



Vinod K Gupta

CEO (Imperial Society of Automotive Engineers, Noida)

Lovely Professional University has provided me the best platform to participate in technical events like GO-Kart, Efficycle etc.



Shouqat Ali

Production Engineer
GE, Las Vegas

Lovely Professional University has provided me a well-established lab setup to improve my practical knowledge



Karan Dhiman

Business Systems Consultant Canadian
Imperial Bank of Commerce

Lovely Professional University provided me good platform to improve my leadership quality



Saptarshi Mitra

Sr. Nuclear Scientist,
CEA : French Alternative Energies & Atomic Energy Commission

The faculty of LPU always encouraged me and motivated continuously like a Guru

INFRASTRUCTURE



Aerospace Lab



Piper A28 aircraft



Automobile Lab



Advance Machining Lab

LEARNING BY DOING



Go-Kart



Effi-cycle



Rally Car Design Challenge



Global Delta Innovation Cup, Shanghai

REVOLUTIONIZING ENGINEERING EDUCATION WITH OUR PATHWAYS & COHORTS APPROACH

PATHWAYS

- Pathways offer a bespoke route towards fulfilling a student's aspirations, crafted with their unique ambitions in mind.
- It empowers individuals to select the career path that aligns seamlessly with their deepest aspirations, allowing them to turn their dreams into a reality.



Corporate
Jobs



Government
Jobs



Higher
Studies



Study
Abroad



Entrepreneurship



Research

COHORTS

- COHORTS is a career-focused approach that allows students to identify their career goals early on and follow a stage-wise career progression.
- The program provides students with opportunities to develop the skills and knowledge required for their chosen career path.



Career - Focused Education:

Discover Your Path with COHORTS Program

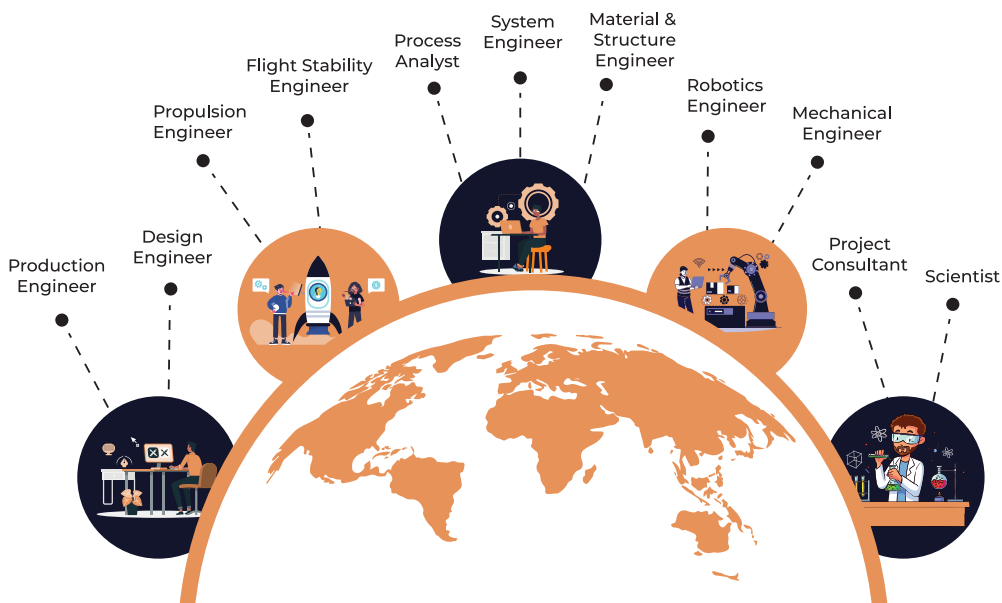
Personalized Roadmap:

Chart Your Course to Success

Skills Development:

Experience through internships, Industry Projects & Research

WE PREPARE OUR STUDENTS AS INDUSTRY READY ENGINEERS



STAR COURSES & ACADEMIC INITIATIVES

STAR COURSES

The STAR courses offered by the School of Mechanical Engineering are designed to provide students with futuristic skills and expectation driven competencies that are directly applicable to the industry & Higher education.

**NATIONAL/INTERNATIONAL
COMPETITION**

HANS-ON PRACTICES

MOOC COURSES

GUEST LECTURES

INDUSTRIAL VISITS

STAR COURSES

**INNOVATIVE PEDAGOGY
TECHNIQUES**

HAND-ON EXPERIENCE

**IMMERSIVE LEARNING
EXPERIENCE**

**COLLABORATIVE
LEARNING**

RESEARCH



School of Mechanical Engineering has organized 5 International Conferences in last 5 years



Advance Central Research Facilities



Advance Central Research Facilities



1500+

RESEARCH PUBLICATION
COUNT



300+

PATENTS



50+

BOOK CHAPTERS



10+

INTERNATIONAL AND
NATIONAL MOUS



Jalandhar-Delhi, G.T. Road, Phagwara, Punjab (INDIA) -144411

Contact: 01824-404455

admissions@lpu.co.in | www.lpu.in

Find us on



Scan QR Code